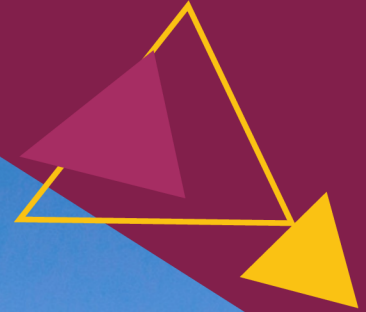


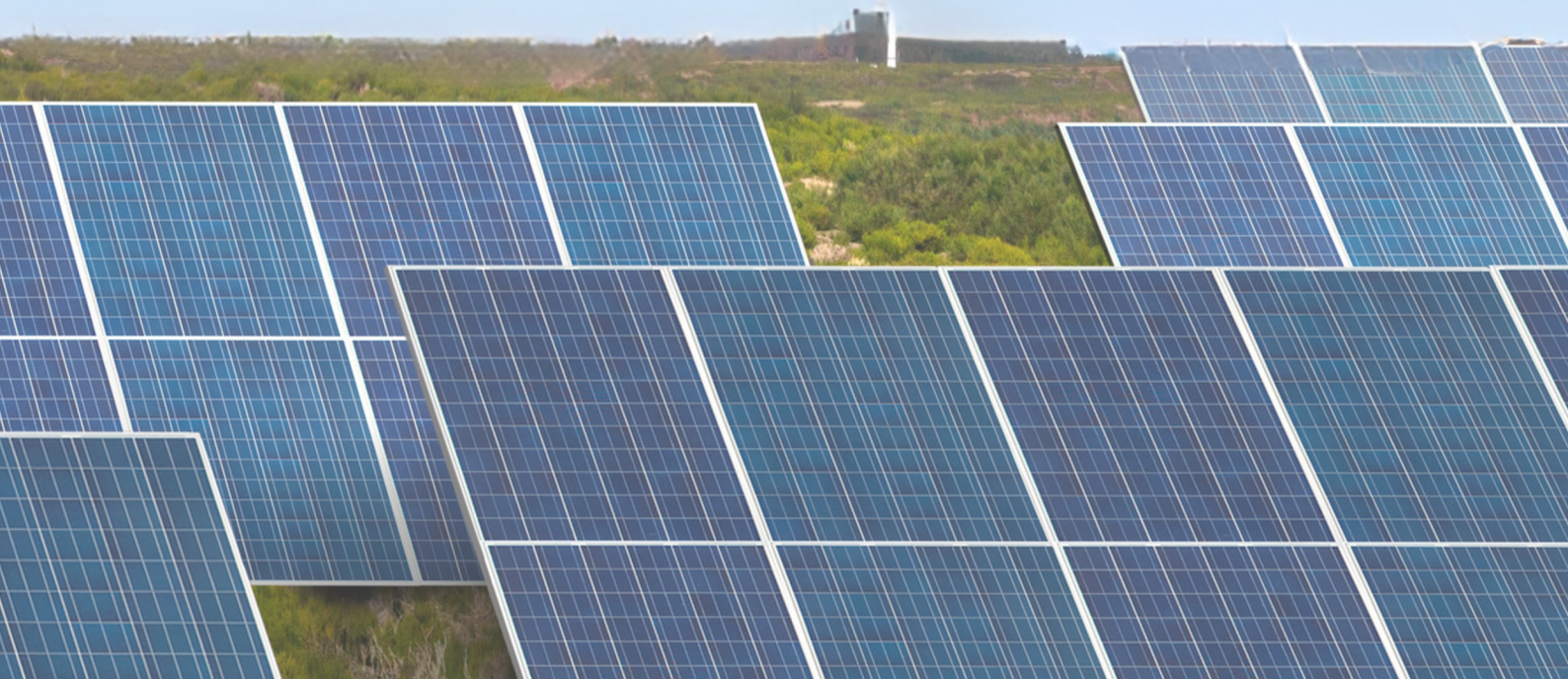
AMITASHA SOLAR PVT. LTD.

Manufacturer of Solar Racking Solutions
from Nagpur, India



AMITASHA

BRIDGING POWER, BUILDING POSSIBILITIES.



ABOUT AMITASHA



At Amitasha Group, a proud family-owned business with over 40 years of experience, we are dedicated to powering infrastructure across India and beyond. Since 1993, we have grown from a modest job- work unit to an independent leading manufacturer of transmission line towers, telecommunication towers, and solar module mounting systems. Our commitment to quality, innovation, and customer satisfaction drives us to deliver cutting-edge steel structures that connect communities and support sustainable energy solutions. As a trusted partner to multinational corporations and EPC players, we continue to push the boundaries of infrastructure development with our expertise and passion.

In a strategic move to expand its solar infrastructure capabilities, Amitasha Enterprises has launched Amitasha Solar Pvt. Ltd. (ASPL), a dedicated daughter company established in 2024. The new venture includes a state-of-the-art manufacturing facility located in a serene area on the outskirts of Nagpur, featuring advanced machinery to enhance production capabilities. This expansion reflects the company's commitment to innovation and growth in the renewable energy sector. ASPL aligns 100% with the policy, mission and vision of Amitasha Group.

Amitasha Solar

MESSAGE FROM THE MANAGING DIRECTOR



Jasmohan Singh

Ever since I performed my first experiment in high school, tracking the efficiency of a solar cell across different inclinations and weather conditions, I have been fascinated with the technology and the industry as a whole. I have had the opportunity to pursue higher education in the field in Germany, one of the global leaders when it comes to advancing solar technology. And this has provided me with a unique insight on the requirements of the European standards of quality and reliability.

My passion is to fulfill these requirements by merging highly economical Indian manufacturing capabilities with efficient European designs to service the ever-growing global solar market.

Therefore we are offering highly economical manufacturing as a service for Solar Racking Solution companies. Being located in central India, we have strategic ties with major steel producers of the country for quick and reliable supply of high quality coated steel. Paired with our state-of-the-art manufacturing facility with top-of-the-line roll forming lines, stamping machines and other key machinery, we are capable to manufacture a wide range of profiles that our customers may need.

I extend an open invitation to all to visit our facilities in India. Our entire team is eager to welcome you all.

Amitasha Solar

OUR PRODUCTS



Z-PROFILE #1

Size MIN: 75 x 35 x 10 x 1.6

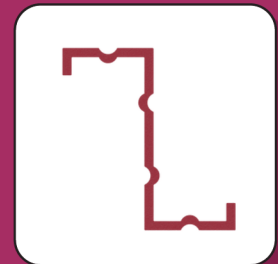
Size MAX: 300 x 100 x 30 x 3



Z-PROFILE #2

Size MIN: 75 x 35 x 10 x 1.6

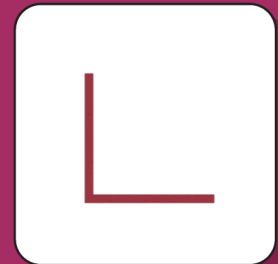
Size MAX: 200 x 80 x 30 x 2.5



L-PROFILE

Size MIN: 30 x 30 x 1

Size MAX: 90 x 90 x 3



HAT-PROFILE #1

Size MIN: 40 x 30 x 5 x 14 x 0.9

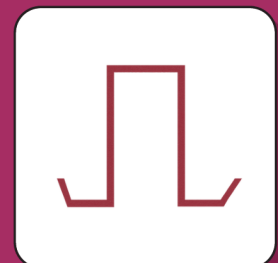
Size MAX: 150 x 90 x 12 x 25 x 1.6



HAT-PROFILE #2

Size MIN: 30 x 27 x 10 x 5 x 0.9

Size MAX: 70 x 55 x 35 x 10 x 2.5



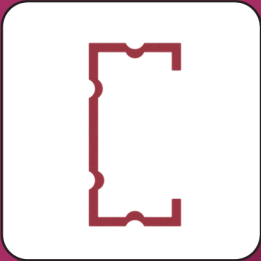
I-BEAM

W6, W8, ISMB, IPE



DIMENSIONS GIVEN ARE IN MM.

Please inquire with our team for further information.



C-PROFILE WITH LIP #1

Size MIN: 75 x 35 x 10 x 1.6

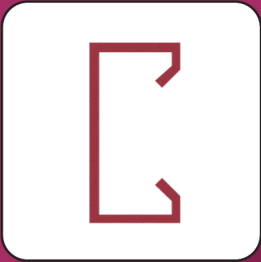
Size MAX: 200 x 80 x 30 x 2.5



C-PROFILE WITH LIP #2

Size MIN: 50 x 25 x 10 x 0.9

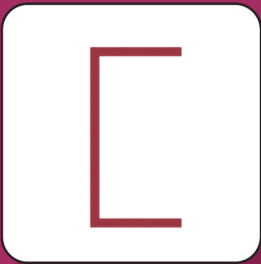
Size MAX: 300 x 110 x 25 x 3



C-PROFILE WITH LIP #3

Size MIN: 75 x 35 x 15 x 10 x 3.5

Size MAX: 200 x 100 x 30 x 20 x 3.5



C-PROFILE WITHOUT LIP

Size MIN: 30 x 20 x 0.9

Size MAX: 300 x 110 x 3

All the above profiles are available in **Hot-Dip Galvanized, GI (Pre-Galvanized Zinc) and ZAM (Zinc-Aluminum-Magnesium)** finish depending on the thickness and steel grade requirement.

We source the raw material in compliance with all international standards such as **ASTM (A36/A572), BS-EN 10025, IS 2062** and other equivalent international standards. **Grades range S235 to S550 or equivalent.**

We can also customize and develop profiles as per the customer designs. We have dedicated tooling partners that allow us to rapidly produce and deploy tooling and cut down on development time for new profiles.

OUR FACILITIES



Located just outside of Nagpur, a logistic hub at the center of India and just 4 kilometers away from the parent organization, ASPL is strategically positioned for servicing both domestic and international customers.

Solar Manufacturing Unit III

With a state-of-the-art manufacturing facility, we have the capability and the capacity to service a wide range of requirements of the Solar MMS and Tracker industry:

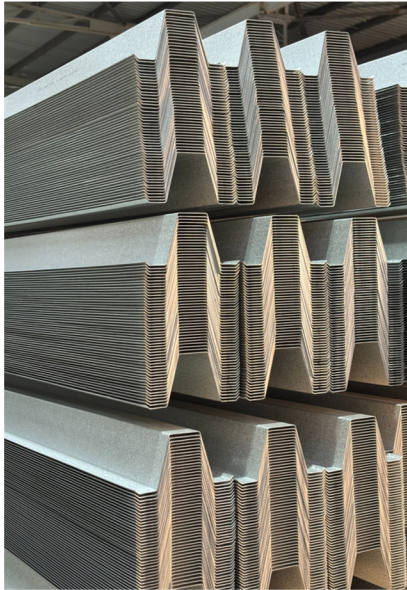
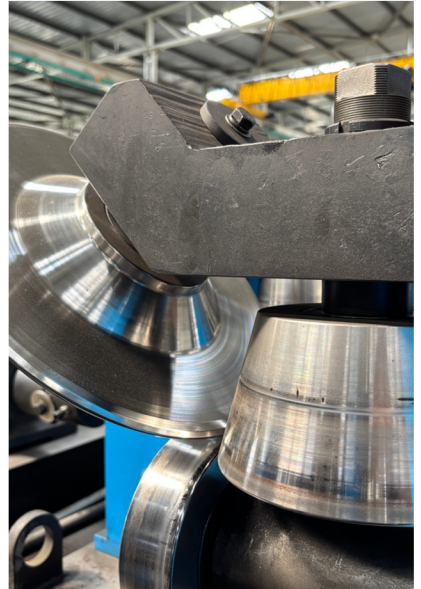
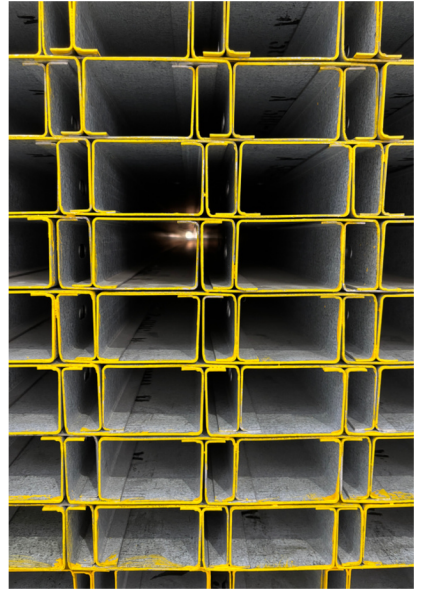
- We have **10 modern high-speed Roll Forming Lines** with on-line and off-line punching that deliver a wide range of profiles, which are majorly required in the solar racking industry.
- **Profiles produced: C, CL, U, Strut, Z, and HAT.**
- We have **fully automated CNC punching machines** which complement our **high-speed roll forming lines** for maximum accuracy and optimal production output.
- We manufacture W beam posts for solar tracker structures with our **advanced Beam shearing and punching machines.**
- Additionally, we have **CNC laser cutting, laser welding, Press Break and CNC Progressive Stamping Press machines** to produce critical components for trackers.

In line with our commitment to sustainability, this unit has been built to be energy independent. With a 200 kWp rooftop Solar PV installation and a Rainwater harvesting system, we aim to produce and store 100% of our power and water respectively.

We aim to achieve this target by 2030.

Amitasha Solar







Amitasha Solar

Nagpur is called the heart of India because of its central geographical location. Also known as the "Orange City", Nagpur is the 13th largest city in India by population and major steel hub, making it ideal for sourcing raw material.

Located in Maharashtra, Nagpur is very well connected to the Mumbai Port with high speed rail and excellent road connectivity, making it extremely easy to export to all countries around the world.

REACH OUT TO US!

MAIL

aspl@amitasha.com

marketing@amitasha.com

WEBSITE

www.amitasha.com

ADDRESS

Khasara Number 28/1 and 28/2, Mouza
Nagalwadi, Tahsil Hingna, Nagpur 440016



An ISO 9001:2015, ISO 14001:2015,
ISO 45001:2018 certified Company.